



Presented by: Allan Oakes, Managing Director

Introduction

- Established in 1993
- Manufactured in house Custom Cables
- Manufactured in-house Looms & Harnesses
- Fastlink has 16,000 Sq. Ft
- 30,000 Cables assemblies manufactured per month
- 4,000 Different types of Assemblies per month
- All cables are 100% Tested with a life time Guarantee
- Fastlink is registered ISO 9001:2015 and BSI accredited

Primary Markets

Industrial



Military/Aerospace



Data Comms, Telecoms



Transportation



Medical Equipment



Oil, Gas & Renewable energy



Instrumentation



How we guarantee Quality:-

All work carried out to IPC Class 3 standard

First off inspection on all Batches

Continuous in process inspections on all batches

All cables 100% tested on completion of Batch

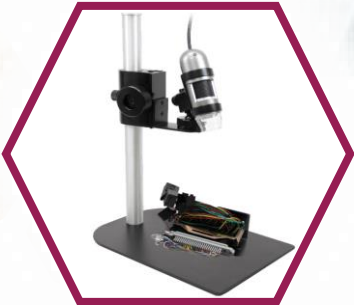
What we use to Test:-



Our standard desktop tester	Tests for	Tests Components
Up to 1024 points with add-on boxes (128 pts/box) Interchangeable adapters IPC-WHMA A-620 Compliant Meets requirements for classes 1, 2, and 3. 1500VDC 1000VAC	Opens Shorts Continuity Verifies solder and crimp terminations Measures resistance Insulation resistance and DWV testing (1500VDC-1000VAC)	Resistors Diodes Capacitors LEDs Switches Twisted pairs

We examine all our assemblies under our magnifying glass, to make sure that everything that comes to you is the best Fastlink can offer.

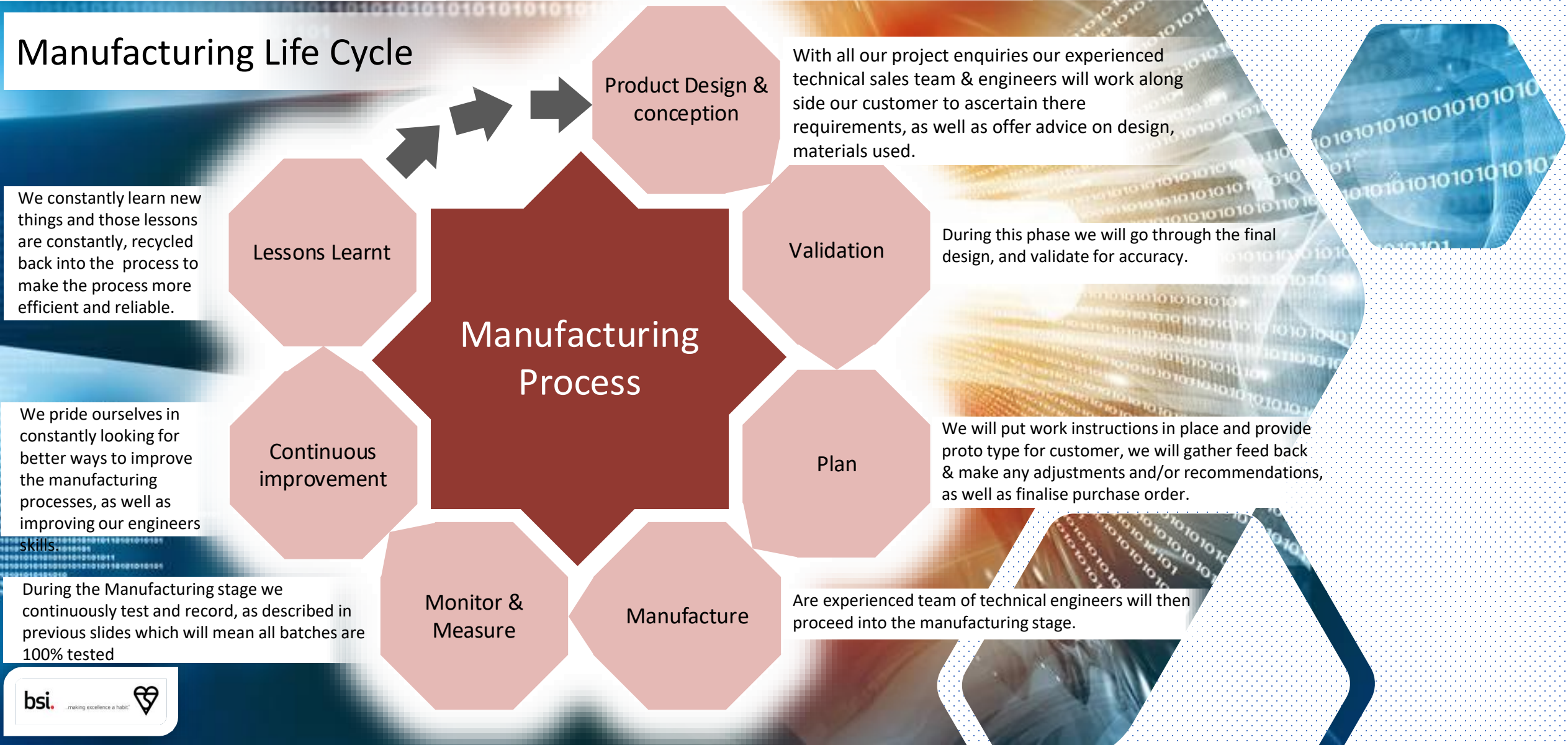
Optics
Magnification: 10-70x, 200x
Sensor
Sensor type: CMOS
Resolution: VGA (640x480)
Maximum frame rate: 30fps



LAN Testing
TIA Categories 3/5e/5/6/6A ISO/IEC Classes C, D, E, E _A , F Alien Crosstalk measurement to certify copper lines for 10GBASE-T in minutes Rocket fast Category 6A and Class F Auto test in 11 seconds IEEE 802.5 Token Ring and IBM type 1

Our test equipment allows us to test and guarantee the quality of your cables

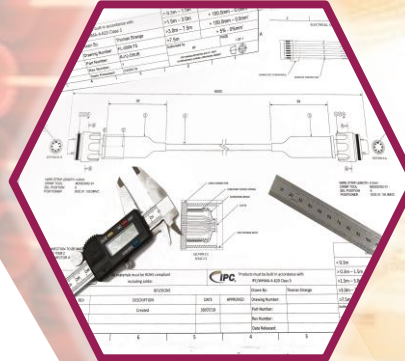
Manufacturing Life Cycle



Production Engineering

We endeavour to work with our customers on the following areas

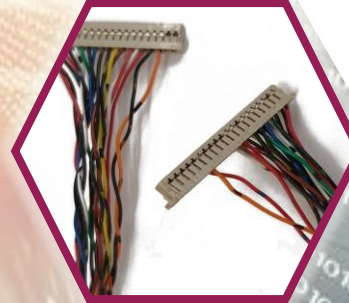
- Front End Support
- Cables Assembly drawing
- Design Proposals
- Material and component selection
- Cable Configuration/ Prototype Builds
- Reverse engineering
- Best Production
- Contract Review methods



Custom Cables

Some of the different connector manufactures the we use but not limited to:

- ERNI
- ODU
- LUMBERG
- POSITRONIC INDUSTRIES
- DEUTSCH
- Molex
- JST
- AMP
- HIROSE
- AMPHENOL
- BINDER
- COMMITAL
- HARTING
- HARWIN



Manufacturing Services

- PCB Interconnection
- Semi or Full Box builds
- Switch Panel Wiring
- Control Panel Wiring
- DIN Rail Assembly Wiring
- Panel work/Boxes –Metal or Plastic
- Prototype – Project inception
- Pre-Production – Small Volume production
- Production – Scheduled Production Runs
- Field Service – Full Product Life Cycle

Everything is 100% tested to Customers Specification



Industry Standard Cables

In addition to the design and custom cable assembly service, Fastlink stock a range of industry standard passive products which include:

- International mains cables for most countries

A full range of networking cables and products including:

- RJ45 patch leads,
- Patch Panels
- Media Filters

- Range of Fibre Cables and panels



Other Useful Cables

- Cisco Cables
- Display Cables, (HDMI, DP, VGA)
- Coax (50Ω, 75Ω)
- Cable Management Hardware

Due to Fastlinks long established presence in the cable market Fastlink can also produce redundant Telecoms products that you wouldn't easily find on the open market

Fastlink Present and Future

Fastlink over the years has grown steadily, with a positive impact on all customers, due to this continuous growth Fastlink has had to find bigger and more efficient premises and currently have 16,000 sq. foot at its disposal and are still growing.

Expanding our skills sets whilst upholding the highest of quality standards as well as training standards for our 45 members of staff.

Fastlink for the foreseeable future will continue to grow as customers keep coming back to us with more complex and exciting new projects.